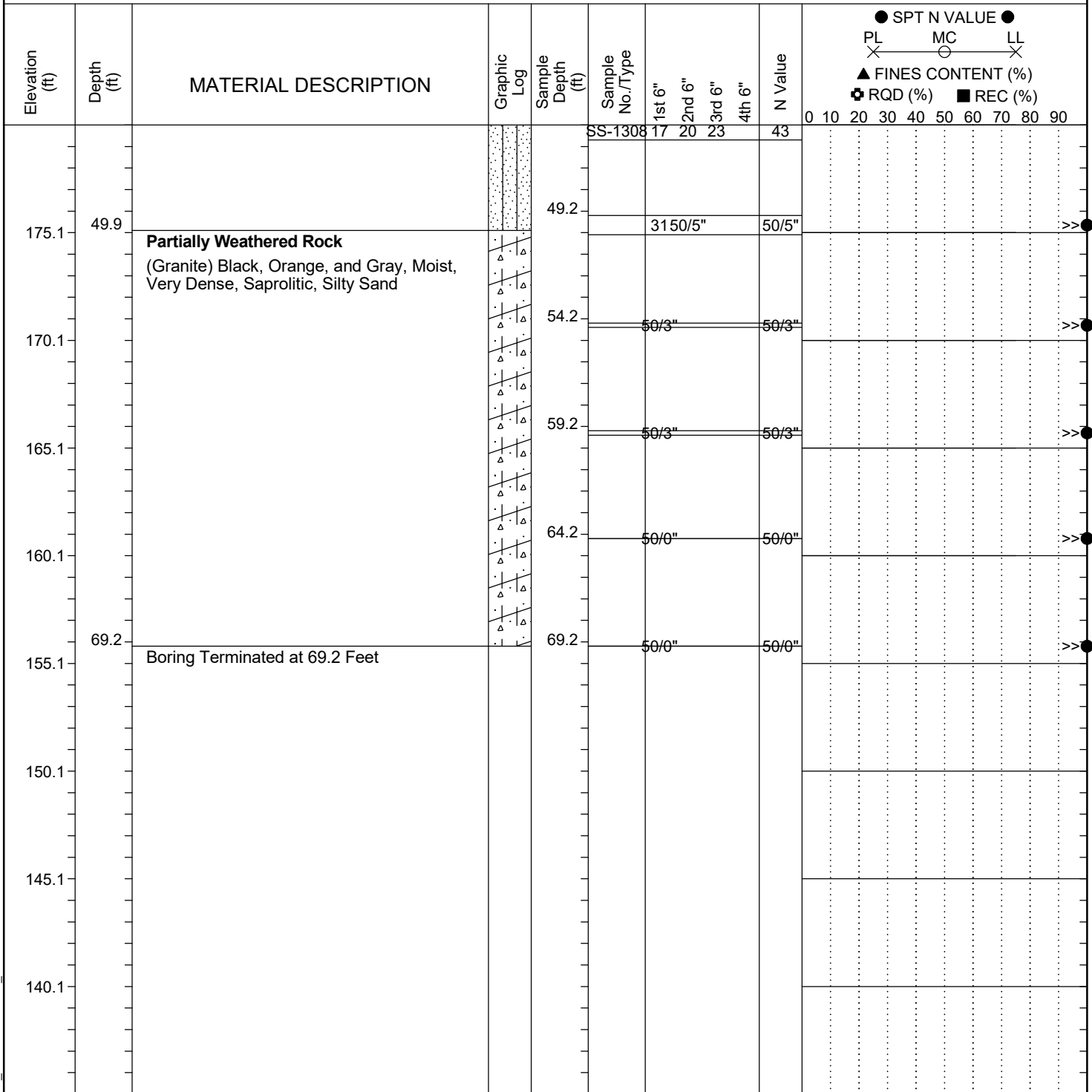


Project ID:	P039718	County:	Richland	Boring No.:	34-End Bent 4 LT
Site Description:	Carolina Crossroads Phase 1 - Segment 1			Route:	Bridge 34
Eng./Geo.:	MS & NM	Boring Location:	3033+19	Offset:	14 LT
Elev.:	225.1 ft	Latitude:	34.02185562	Longitude:	-81.09436789
Total Depth:	69.2 ft	Soil Depth:	64.2 ft	Core Depth:	NA ft
Date Started:	4/19/2022				
Date Completed:	4/19/2022				
Bore Hole Diameter (in):	2.25	Sampler Configuration		Liner Required:	Y (N)
Liner Used:	Y (N)				
Drill Machine:	D-50 #0439	Drill Method:	RW	Hammer Type:	Automatic
Energy Ratio:	91%				
Core Size:	NA	Driller:	R. Cassell	Groundwater:	TOB NM
24HR	31 ft				


LEGEND

SAMPLER TYPE		DRILLING METHOD	
SS - Split Spoon	NQ - Rock Core, 1-7/8"	HSA - Hollow Stem Auger	RW - Rotary Wash
UD - Undisturbed Sample	CU - Cuttings	CFA - Continuous Flight Augers	RC - Rock Core
AWG - Rock Core, 1-1/8"	CT - Continuous Tube	DC - Driving Casing	